

*Iba*



*myQA*<sup>TM</sup>

# Your Global Quality Assurance Platform

**All-in-One. All Connected. All Secure.**

# Dealing with complexity in your QA?

myQA™ All-in-One.



- ✓ Linacs OK
- ✓ Patients OK
- ✓ Reports APPROVED
- ✓ Satellite Center OK
- ✓ Annual QA SCHEDULED

myQA Cockpit

Test Results   Trend Analysis

90% ✓   05% ⚠️   05% ✗

Your central hub to keep your instant QA overview.

Test Name	Device	Date	Status
Linac 1	Linac 1	2019-01-01	OK
Linac 2	Linac 2	2019-01-01	OK
Linac 3	Linac 3	2019-01-01	OK
Linac 4	Linac 4	2019-01-01	OK

- ✗ Difficulty in keeping an overview of your QA?
- ✗ Not enough time for data analysis?
- ✗ Worried about missing crucial information?
- ✗ Difficulty in learning numerous applications?

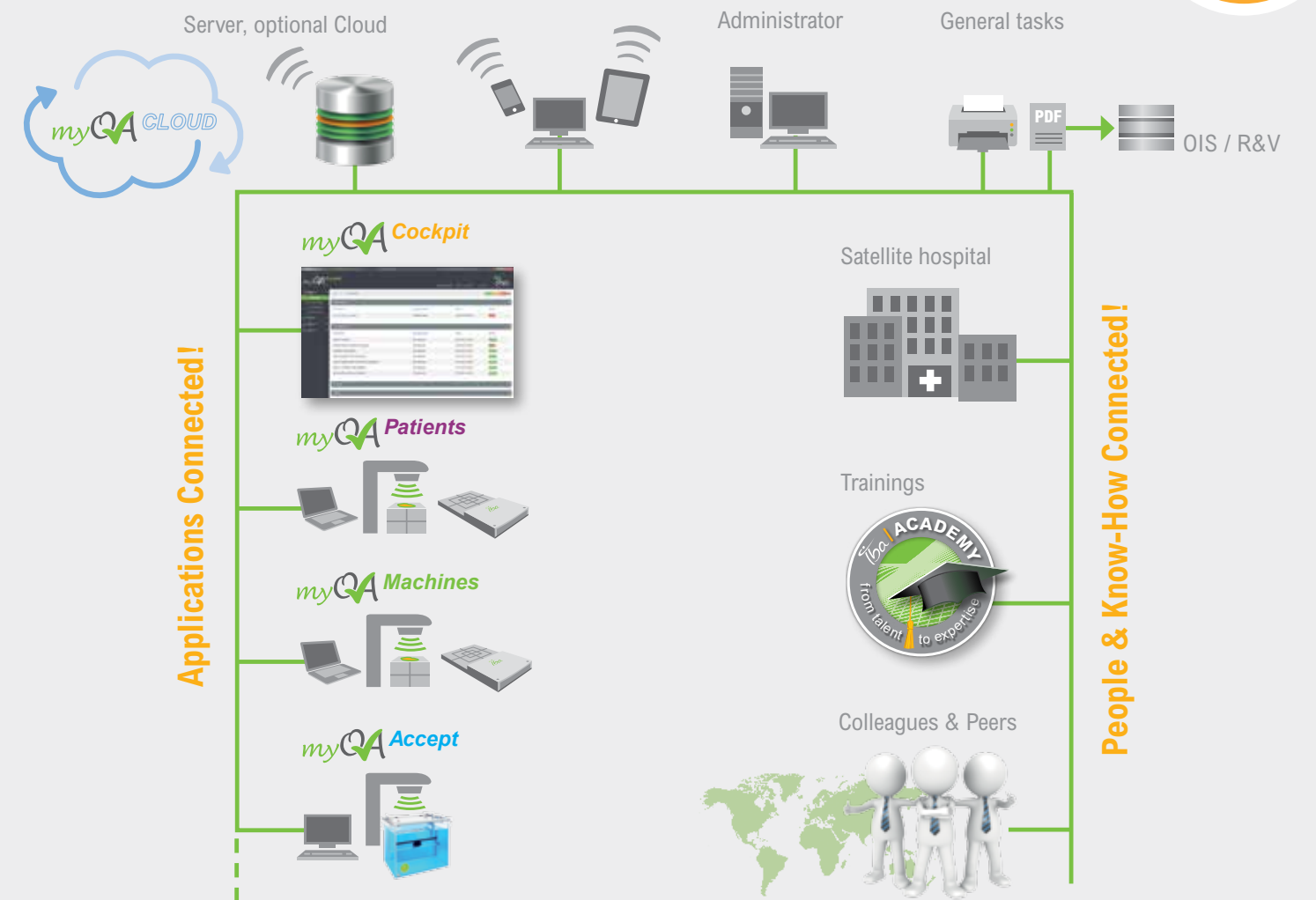
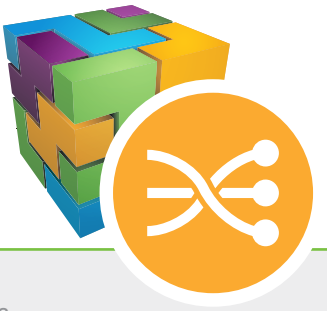
Need an integrated solution?

myQA™ is your All-in-One Platform

- ✓ All QA applications **integrated**
- ✓ Instant QA **overview**
- ✓ **Intuitive** and **unique** interface
- ✓ Simple and clear **reporting**

# Missing the connectivity in your QA?

myQA™ All connected.



- ❌ No link between data, software programs & hardware devices?
- ❌ Limited data compatibility between all your QA applications?
- ❌ Lack of data comparability?
- ❌ Difficulty in exchanging best practices and know-how with peers?

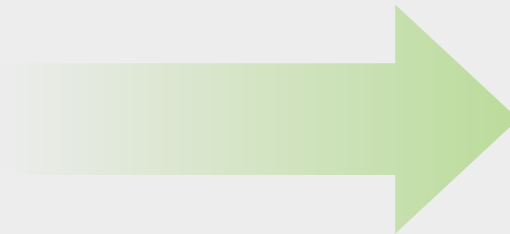
**Need a connected solution?**

myQA™ connects your QA applications & know-how!

- ✓ All applications connected **anytime & anywhere**
- ✓ **Accessibility & comparability** of data, including **benchmarks**
- ✓ Connection to **know-how & best practice**
- ✓ Network with peers for the exchange of **“tips & tricks”**

# Looking for peace of mind in your QA?

myQA™ All Secure.



- ❌ Difficulty in following evolving technologies and protocols, and complying with regulations?
- ❌ Unsure about best practice and most efficient QA procedures for each modality?
- ❌ Worried about the safety of your data?

**Need a more supportive solution?**

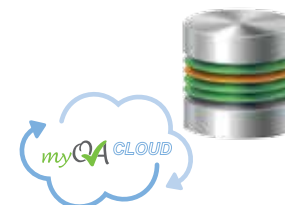
myQA™ secure in all your QA aspects!



✓ **Secure Operations:** Regular and automatic software updates to always remain up-to-date & compliant \*



✓ **Secure Outcome:** Training support with the IBA Academy and clinical partners; 24/7 support from the Service Portal and Service Team



✓ **Secure Data:** Integrity with consistent data storage and access from your central database or the cloud



### Personal benefits.

- ✓ **Time saved** with an easy and efficient workflow, a common look and feel, and simple functionalities
- ✓ **Full overview** with central database and "one click report"
- ✓ **Better results** based on simple comparison of all your data
- ✓ Gain knowledge and best practices from IBA peers
- ✓ **Peace of mind** based on Service Portal and Maintenance Contract program

### Financial benefits.

- ✓ Scalable solution: Simple tailoring to your specific needs
- ✓ **Regular automatic updates** protecting your investments with guaranteed costs for the contract period\*
- ✓ **More patients treated** with less QA effort
- ✓ Speed up your workflow with increased efficiency and connectivity
- ✓ Quick learning and implementation of new treatment modalities

### Strategic benefits.

- ✓ **Safer** patient treatments
- ✓ **Integrate** the whole department and satellite hospitals, and **get connected** with your peers!
- ✓ Global settings and common algorithms giving **consistent results**
- ✓ Maintenance contracts and training programs **always keeping you up-to-date**
- ✓ **Personalize** your QA platform exactly to your needs

Treatment Safety.      Save time.      Compare data.      Be up-to-date.

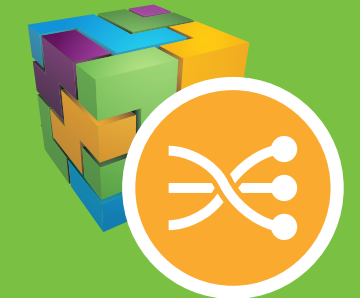
**Gain efficiency.**      **Make your QA personalized!**

Treat more patients.      Exchange tips & tricks.

Save money.      Feel confident.



All Secure.



All Connected.



All-in-One.

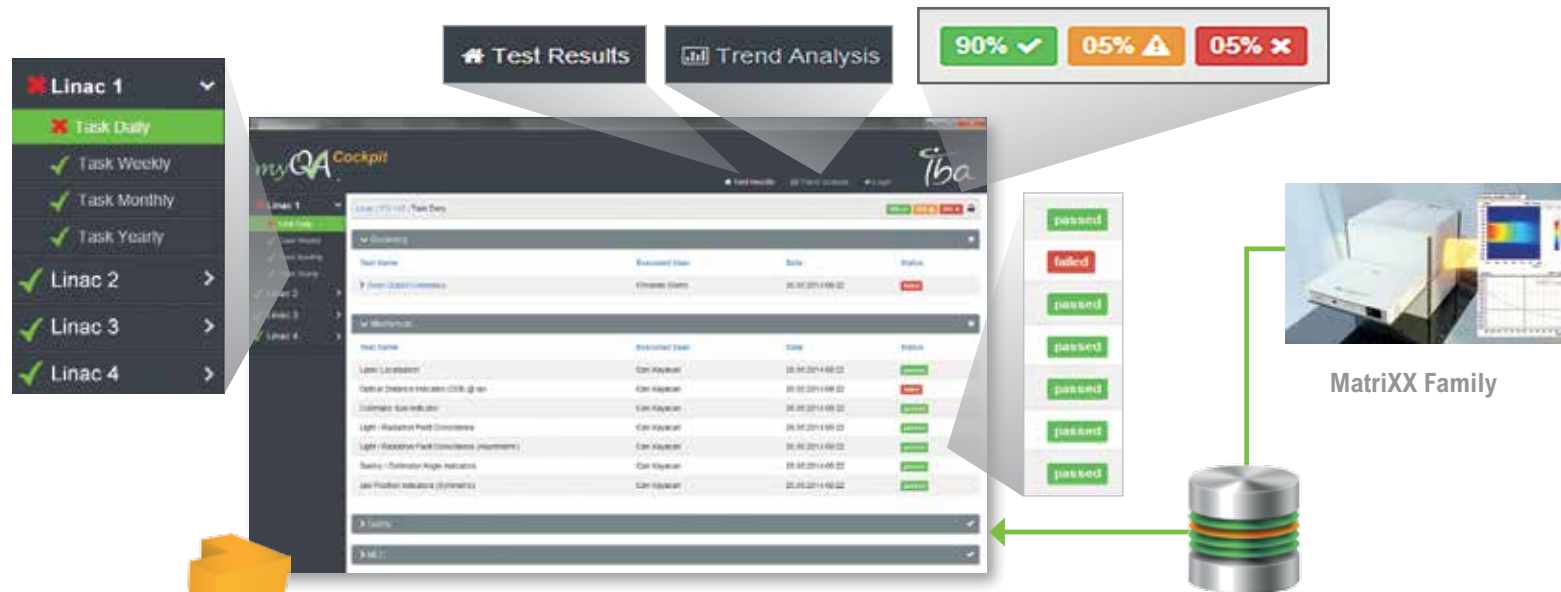
Get started now.  
Grow your Global QA platform  
with your needs!

# myQA™ One Platform. Multiple Applications.

Join the myQA journey  
...this is just the beginning!



**AT A GLANCE.** Your brand new Global QA Platform integrates patient QA as well as machine QA and a Cockpit, including central user & equipment management. This platform enables you to access the different software modules and all data via one uniquely designed and intuitive interface, from different devices.



## myQA Cockpit

### Don't miss any key information

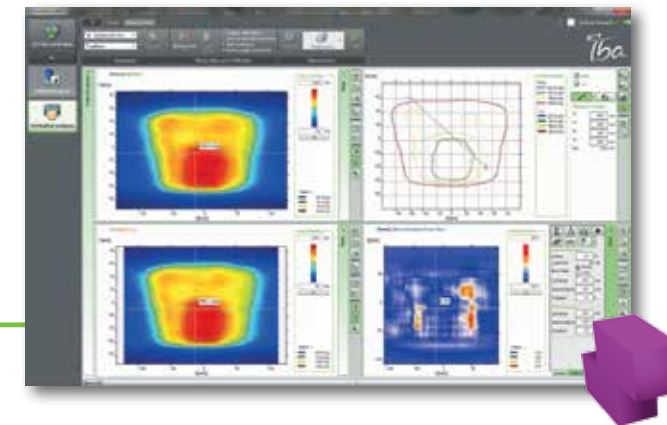
- ✓ Status overview of your clinic, your department, all your patients treatments plans and all your devices
- ✓ Traffic light style
- ✓ Quick access to your QA parameters and detailed test results
- ✓ Track your data: Trend Analysis and Statistics
- ✓ Browser application requiring **no local installation**, running on tablets and accessible from **anywhere** in your clinic

### Just want to measure? Use the **FAST TRACK!**



- ✓ Connect to your StarTrack or MatriXX
- ✓ Start Measurement
- ✓ Instant results and real-time analysis

## myQA Patients



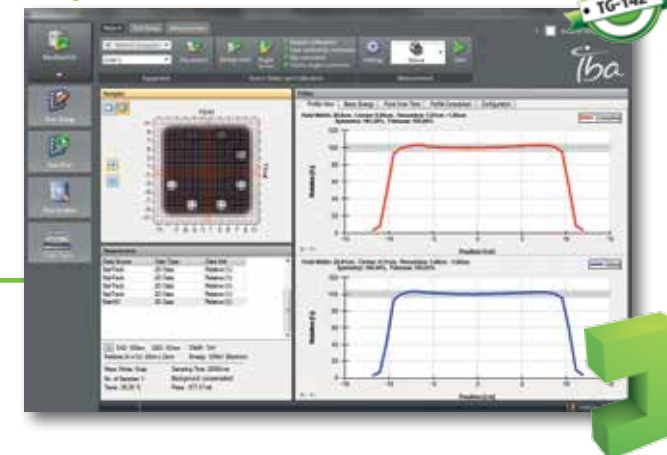
### Patient Plan Verification

✓ Workflow optimized plan verification in just 4 steps:

- 1 Import
- 2 Measure
- 3 Verify
- 4 Report

- ✓ Increase your efficiency and reduce the patient QA time
- ✓ IMRT and rotational cases, global and local gamma
- ✓ Review the status of your patient verification in the Cockpit!

## myQA Machines

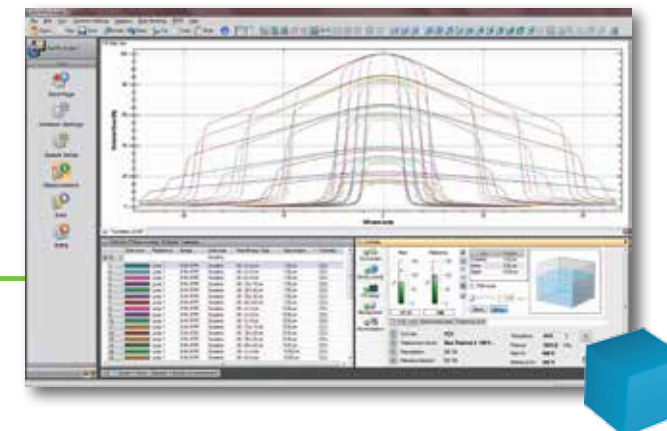


### Protocol based Machine QA

- ✓ Generic tests and customizable protocols (expected results, references & tolerances, frequency)
- ✓ Complete machine QA according to TG-142
  - Dosimetry with Startrack or MatriXX
  - CBCT QA, EPID QA
  - MLC QA based on log files or images
- ✓ Scheduler: Manage your tasks and your time
- ✓ Import water phantom data to use as reference
- ✓ Machine QA in 3 steps:

- 1 Test Setup
- 2 Test Run
- 3 Test Archive

## myQA Accept



### Commissioning & annual Linac checks

- ✓ Use the power of the Blue Phantom system for establishing your high accuracy profiles
- ✓ Easily integrate your profiles e.g. into your myQA Machines as a daily reference to your gold standard!
- ✓ Fastest, most Accurate, most Reliable

- 1 Queue Setup
- 2 Data Acquisition
- 3 Handling, Analysis
- 4 RTPS Transfer

# IBA in a Nutshell



IBA offers innovative high-quality solutions and services with a focus on patient safety in cancer diagnosis and therapy.

## Radiation Therapy: Fighting Cancer Safely and Precisely

- ▶ Industry-leading dosimetry and QA solutions that maximize efficiency and minimize errors for better outcomes
- ▶ Flexible soft tissue imaging markers (VISICOIL™) enable precise tumor targeting and tracking for pinpoint RT, IGRT and SBRT treatment accuracy and patient safety
- ▶ Undisputed leader in Proton Therapy delivery systems:  
Providing highly precise and effective radiation therapy

## Medical Imaging: Safer Imaging, Earlier Cancer Detection

- ▶ Innovative Quality Assurance (QA) devices for x-ray dose and image quality checks, as well as QA of diagnostic displays
- ▶ Patient dose monitoring solutions for x-ray imaging systems

[dosimetry-info@iba-group.com](mailto:dosimetry-info@iba-group.com)

### Europe, Middle East, Africa

IBA Dosimetry GmbH  
Bahnhofstr. 5  
90592 Schwarzenbruck, Germany  
Tel.: +49 9128 607 0  
Fax: +49 9128 607 10

### North America, Latin America

IBA Dosimetry America  
3150 Stage Post Drive, Suite 110  
Bartlett, TN 38133, USA  
Tel.: +1 901 386 2242  
Fax: +1 901 382 9453

### Asia Pacific

IBA Dosimetry Asia Pacific  
No.6, Xing Guang Er Jie Beijing  
OPTO-mechatronics  
Industrial Park (OIP),  
Tongzhou District  
Beijing 101111, China  
Tel.: +86 10 8080 9288  
Fax: +86 10 8080 9299